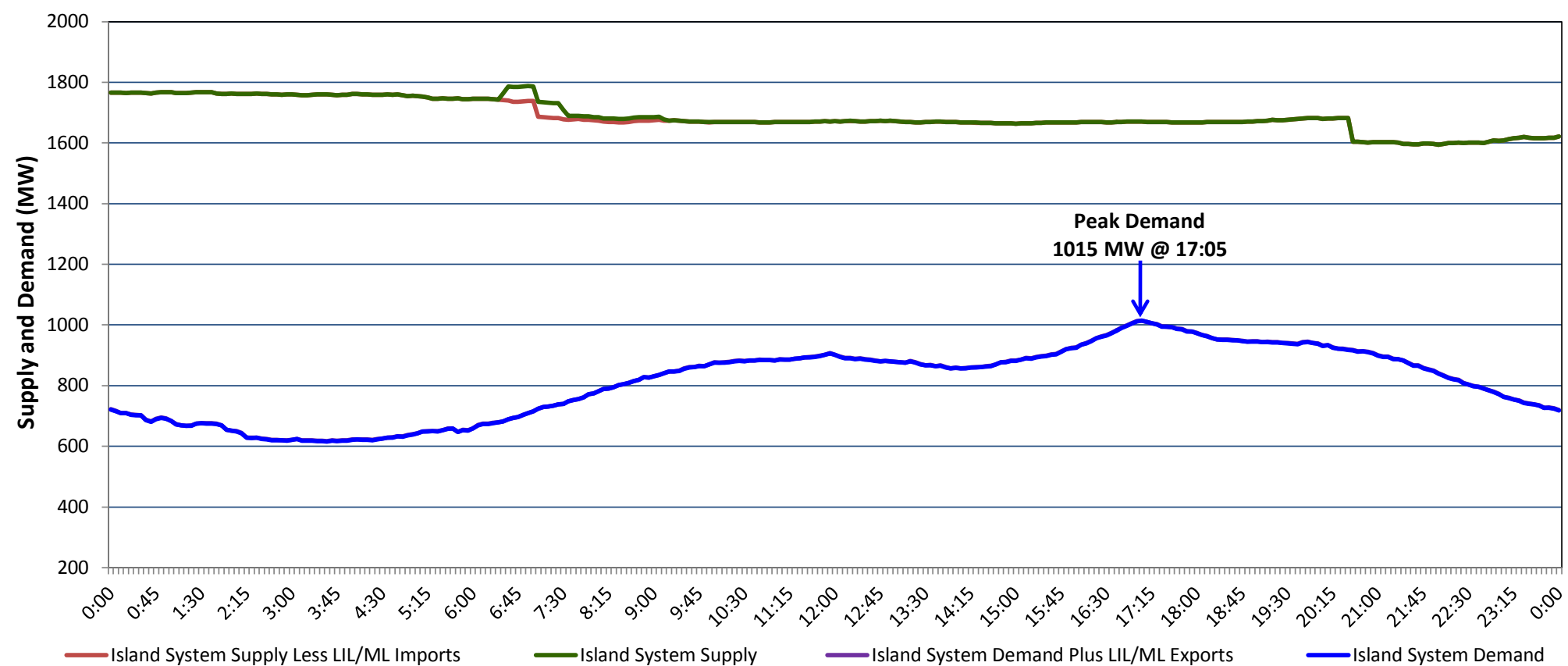


**Newfoundland Labrador Hydro (NLH)  
Supply and Demand Status Report Filed Thursday, November 12, 2020**

**Section 1  
Island Interconnected System Supply, Demand & Exports  
Actual 24 Hour System Performance For Wednesday, November 11, 2020**



**Supply Notes For November 11, 2020**

- 1,2
- A As of 1134 hours, October 29, 2020, Hinds Lake Unit available at 65 MW (75 MW).
  - B As of 0041 hours, November 07, 2020, Holyrood Unit 1 available at 70 MW (170 MW).
  - C As of 1431 hours, November 08, 2020, Paradise River Unit unavailable due to planned outage (8 MW).
  - D As of 0748 hours, November 09, 2020, Holyrood Unit 3 unavailable due to planned outage (150 MW).
  - E At 0701 hours, November 11, 2020, Stephenville Gas Turbine unavailable due to planned outage (50 MW).
  - F At 2034 hours, November 11, 2020, Bay d'Espoir Unit 6 unavailable due to planned outage (76.5 MW).

**Section 2  
Island Interconnected Supply and Demand**

Thu, Nov 12, 2020	Island System Outlook <sup>3</sup>	Seven-Day Forecast	Temperature (°C)		Island System Daily Peak Demand (MW)	
			Morning	Evening	Forecast	Adjusted <sup>7</sup>
Available Island System Supply: <sup>5</sup>	1,645 MW	Thursday, November 12, 2020	12	10	955	864
NLH Island Generation: <sup>4</sup>	1,300 MW	Friday, November 13, 2020	5	2	1,040	948
NLH Island Power Purchases: <sup>6</sup>	110 MW	Saturday, November 14, 2020	2	1	1,190	1,096
Other Island Generation:	235 MW	Sunday, November 15, 2020	1	-1	1,140	1,047
ML/LIL Imports:	- MW	Monday, November 16, 2020	-3	4	1,280	1,185
Current St. John's Temperature & Windchill:	11 °C	Tuesday, November 17, 2020	5	2	1,185	1,091
7-Day Island Peak Demand Forecast:	1,280 MW	Wednesday, November 18, 2020	1	0	1,185	1,091

**Supply Notes For November 12, 2020**

- 3
- Notes:
1. Generation outages for running and corrective maintenance are included. These are not unusual for power system operations. They generally do not impact customer supply. The power system operators schedule outages to system equipment whenever possible to coincide with periods when customer demands are low and sufficient supply reserves are available. However, from time to time equipment outages are necessary and reserves may be impacted.
  2. Due to the Island system having no synchronous connections to the larger North American grid, when there is a sudden loss of large generating units there may be a requirement for some customer's load to be interrupted for short periods to bring generation output equal to customer demand. This automatic action of power system protection, referred to as under frequency load shedding (UFLS), is necessary to ensure the integrity and reliability of system equipment. Under frequency events have typically occurred 5 to 8 times per year on the Island Interconnected System and the resultant customer load interruptions are generally less than 30 minutes. With the activation of the Maritime Link frequency controller during the winter of 2018, UFLS events have occurred less frequently.
  3. As of 0800 Hours.
  4. Gross output including station service at Holyrood (24.5 MW) and improved NLH hydraulic output due to water levels (35 MW).
  5. Gross output from all Island sources (including Note 4).
  6. NLH Island Power Purchases include: CBPP Co-Gen, Nalcor Exploits, Rattle Brook, Star Lake, Wind Generation and capacity assistance (when applicable).
  7. Adjusted for curtailable load, market activities and the impact of voltage reduction when applicable.

**Section 3  
Island Peak Demand Information  
Previous Day Actual Peak and Current Day Forecast Peak**

Wed, Nov 11, 2020	Actual Island Peak Demand <sup>8</sup>	17:05	1,015 MW
Thu, Nov 12, 2020	Forecast Island Peak Demand		955 MW

- Notes: 8. Island Demand / LIL / ML Exports (where applicable) is supplied by NLH generation and purchases, plus generation owned and operated by Newfoundland Power and Corner Brook Pulp & Paper (Deer Lake Power, DLP).